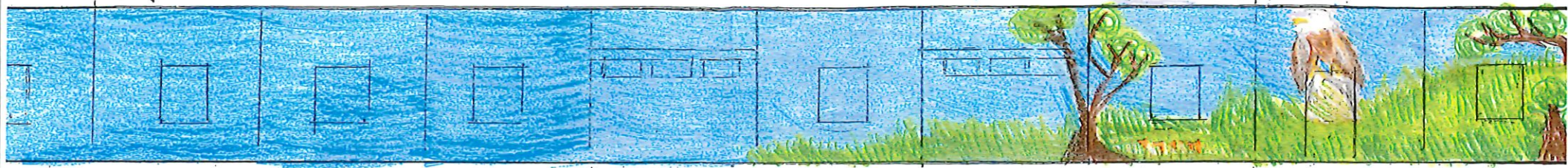


Opalanie Park Building

Long Side



* Design Right 3 sections for (2026) connects to Below

1/2" LEFT Side of Corner

OPALANIE PARK - ZOEY WEBER

The idea for my mural was to represent the Lenape people and the natural environment. The leaves are sassafras leaves, which were historically used for medicine, dyes, and insect repellent. The background blends into the environment with the rolling hills and high grasslands, including native plants like milkweed and oak trees. The mural contains a bald eagle, which is the namesake of the park in the Lenape language.

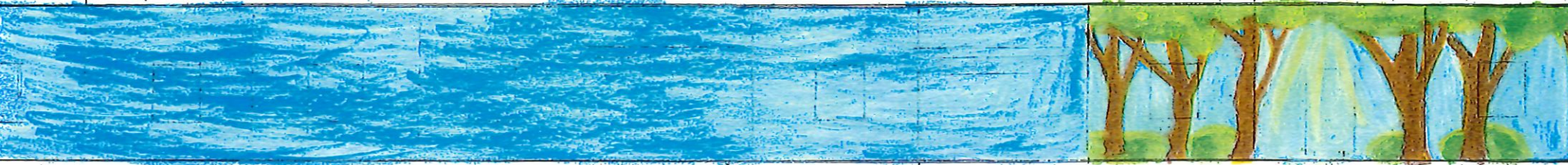
Design this area:



Zoe Weber

Opalanie Park Building

Long Side



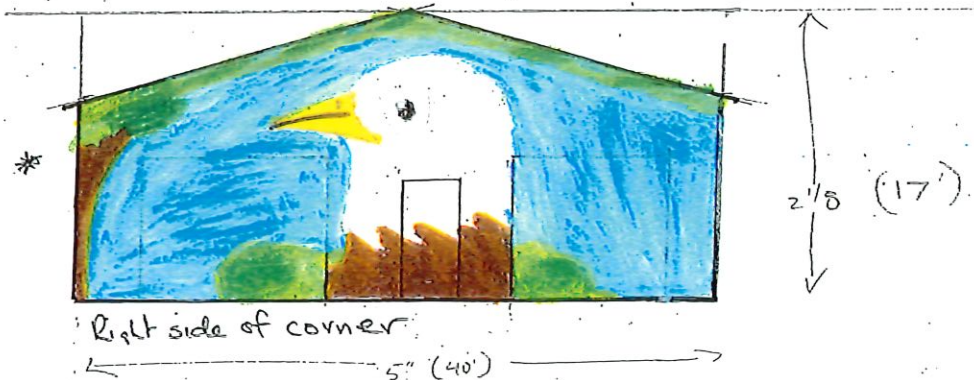
1/2" LEFT Side of Corner

* Design Right 3 sections for (2026) connects to Below

OPALANIE PARK - TYLER PAGE

My mural mock-up is meant to be simple. It showcases a bald eagle (its namesake) and includes subtle fantasy elements that blend into the landscape of thin trees and light mist. Small hints of fantasy float in the air, like glowing specks and softly shifting shadows. A bald eagle sits in the center, clear and large, standing out against the muted forest background. The blue sky and background of the mural will blend with the surrounding scenery.

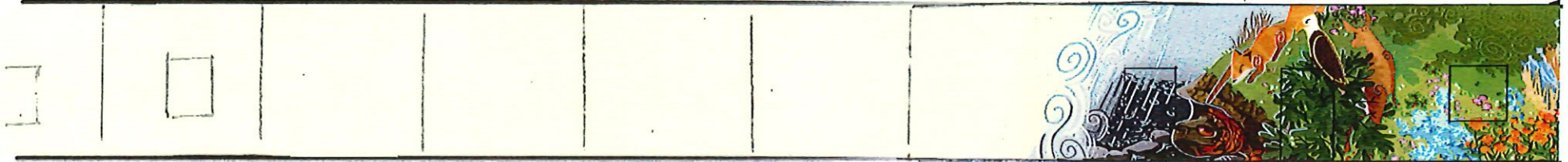
Design this area



Corien Duske

Opalanie Park Building

Long Side



* Design Right 3 sections for (2026) connects to Allow

Left Side of Corner

Ren Duske

Opalanie Park Mural Inspiration & Information

My mural is designed to show, in tandem, the unity between the beauty of the landscape and the community and togetherness you have embraced at Opalanie Park. Through the carefree adventuring of the red fox, bald eagle, and white-tailed deer, I aimed to show the happiness and joy we give each other by embracing differences and working together, which both kids and adults can understand when they visit the park. The mural pays homage to the native population and their culture through showing their wigwam dwellings, featuring the bald eagle, and showing a scene from the creation myth of the Lenape. The story, as I was able to find it, entails a turtle saving the lands from a great rainwater flood by rising up with the land on its back. The species of local plants that I featured are Butterfly Weed, Forget-Me-Nots, May Flowers, Spring Beauties (Claytonia), Daisy Fleabane, Spotted Joe Rye Weed, Wild Strawberries, Wild Bee Balm, and Rhododendron Maximum.

Design this area



Right side of corner

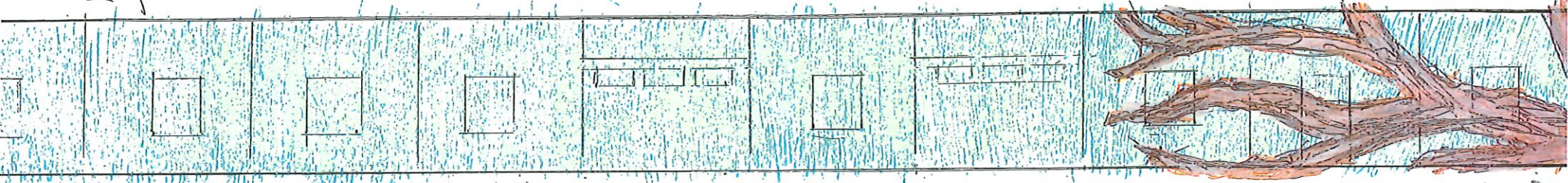
2'8" (17')

5' (45')

Andrew Monaco

Opalanie Park Building

Long Side



* Design Right 3 sections for (2026) connects to Below

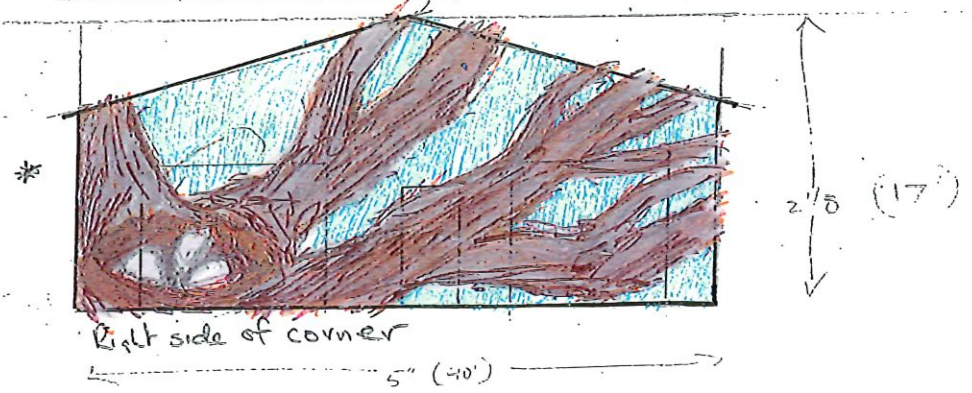
1/1" LEFT Side of Corner

OPALANIE PARK - ANDREW MONACO

When creating my take on the Opalanie mural concept, I decided that the best way to represent Opalanie was through the representation of new life. Opalanie, a newly formed park, is the perfect display of new life. To reflect this in the mural, I designed a tree with the nest of an eagle at the center, where a bundle of eggs lay. While the tree has lost its leaves to the cold season, its branches cradle new beginnings by structuring the nest of the eagle, just as Opalanie will soon hold countless memories.

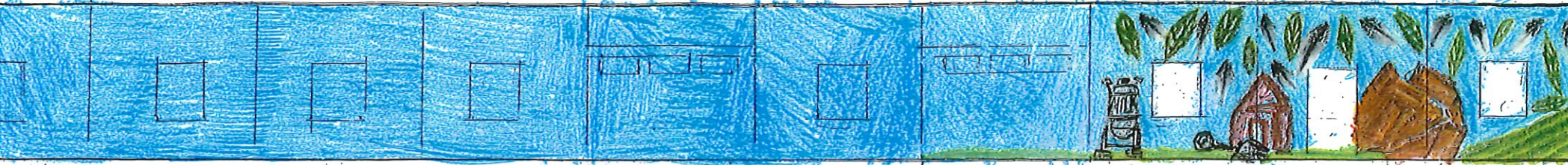


Design this area



Opalanie Park Building

Long Side



* Design Right 3 sections for (2026) connects to Below

1/1" LEFT Side of Corner

OPALANIE PARK - RAJA NUKALA

My mural design showcases the countryside of Opalanie and its subsequent transformation. It incorporates bald eagle feathers and tree leaves to depict the land as the Lenape saw it, and a dairy farm, which depicts the latter use.

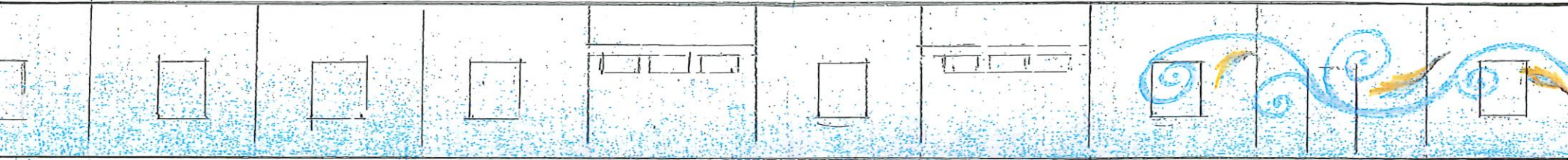
Design this area



Raja S. Nukala

Opalanie Park Building

Long Side



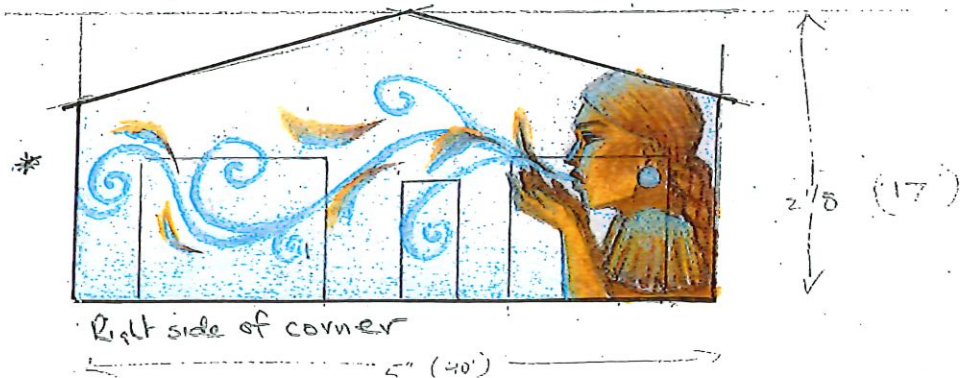
1/4" LEFT Side of Corner

* Design Right 3 sections for (2026) connects to Below

OPALANIE PARK - DANIELLA FRANCA

"Girl Blowing the Wind" represents the original Lenape People and their contribution to Opalanie Park's history. The Lenape girl blowing the wind carries the eagle feathers across the mural design to both demonstrate the mark the tribe made on the land and incorporate the importance of the eagle. It is a nod to the Lenape culture, importance, and respect of nature, which mirrors how Opalanie Park today respects that same nature.

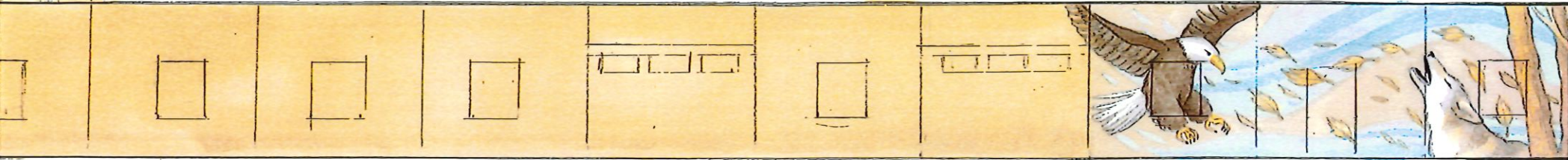
Design this area



Daniella Franca

Opalanie Park Building

Long Side



* Design Right 3 sections for (2026) connects to Below

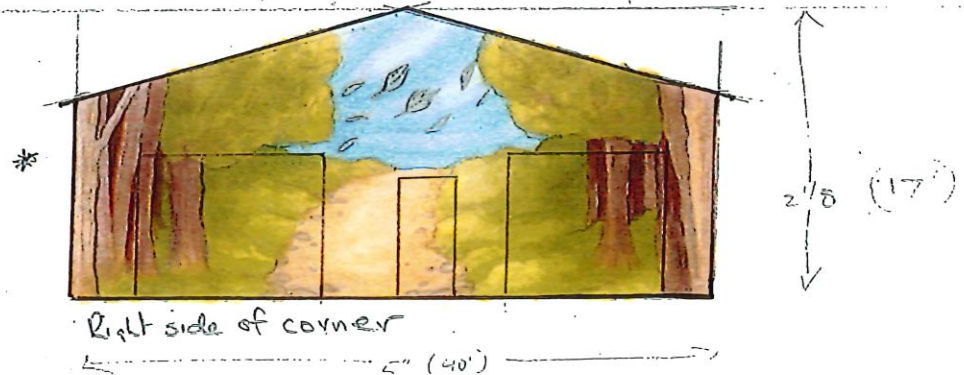
1/1" LEFT Side of Corner

Design this area

Opalanie Park Mural Concept - Sophie Tridico

The focus of this concept is to capture the nature found in Opalanie Park and to depict symbols important to the Lenape tribe. Naturally, the bald eagle is depicted, as the bird is what the park is named after. The mural also features the wolf, a symbol of strength and leadership in the Lenape tribe, and a further nod to the wildlife of the park. The center of the mural depicts a nature scene to represent the park while also blending into the surrounding landscape. To tie all of these aspects together, the wind and blowing leaves in the background offer an artistic yet naturalistic accent that provides motion and flow throughout the mural.

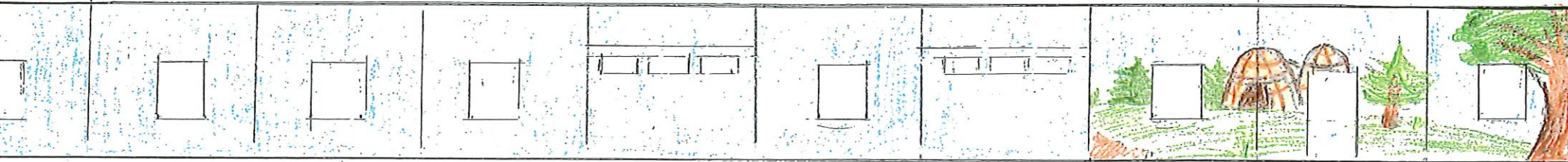
Design this area



Right side of corner

Opalanie Park Building

Long Side



1/1"

LEFT Side of Corner

* Design Right 3 sections for (2026) connects to Below

OPALANIE PARK - SARA LADD

In this mural, I created a scene that captures the history behind Opalanie Park and the surrounding area. The bald eagle is flying over the recognizable landscape of West Vincent Township. An oak tree and the hilly landscape surround the Lenape tribe's housing to unite the important history and the beautiful nature we see today.

Design this area



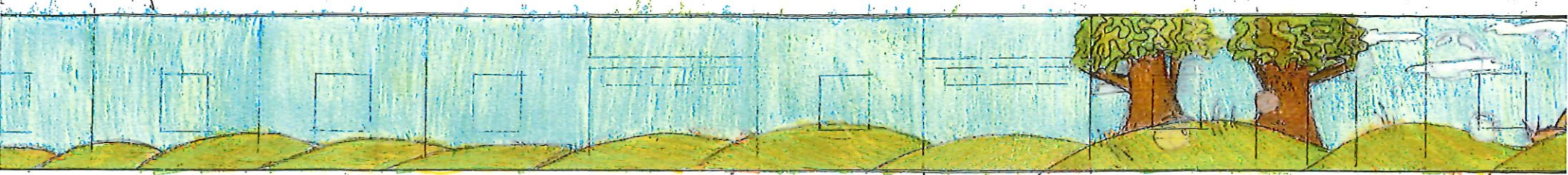
Right side of corner

5" (40')

Sara Ladd

Opalanie Park Building

Long Side



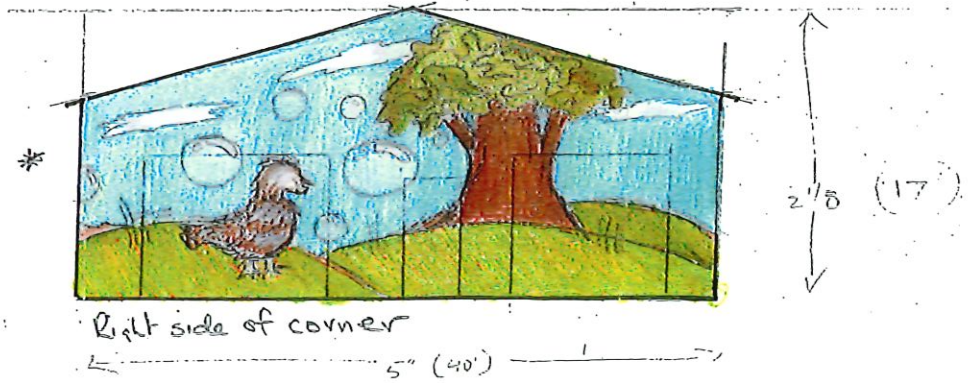
1/2" LEFT Side of Corner

* Design Right 3 sections for (2026) connects to Below

OPALANIE PARK DESIGN - AVA DEFOOR

My mural design represents a natural environment that includes elements relevant to the area. For example, my design includes Pennsylvania's state bird, the Ruffed Grouse, and large trees, which are common in the area. To express human interaction within nature, I added bubbles, which show how people engage with their environment.

Design this area



Ava DeFOOR